



MORGAN ASSOCIATES

— ESTATE & LETTINGS AGENCY —



19, Lansdown Place,  
Cheltenham GL50 2HX  
£1,100 Per Month

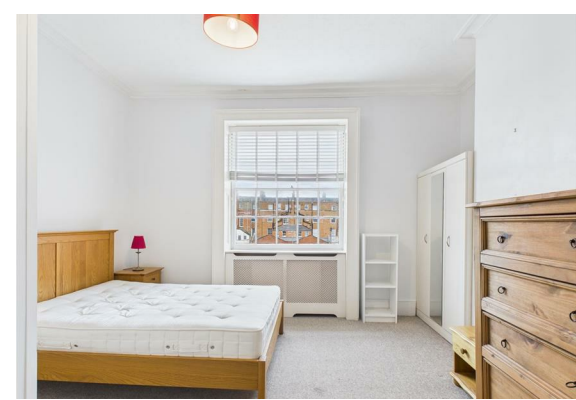


## 19, Lansdown Place,

### Cheltenham GL50 2HX

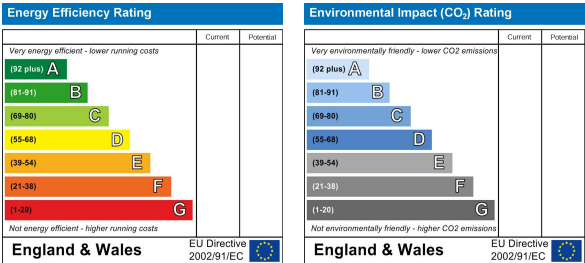
Flat 4, 19 Lansdown Place is a well-presented furnished apartment, set within an attractive period property in a sought-after location. The flat offers bright, well-proportioned accommodation, with a practical layout that makes excellent use of the available space. The property has 1 large double bedroom with an en suite bathroom with a shower. The kitchen diner and reception is open plan with large windows allow plenty of natural light throughout, creating a comfortable and welcoming living environment.

The apartment is warmed by gas central heating throughout and benefits from unallocated off road parking to the front.



Floor Plan

Energy Efficiency Graph



Area Map



Viewing

Please contact us on 01242 514 285 if you wish to arrange a viewing appointment for this property or require further information.

Rotunda Buildings Montpellier Exchange  
Cheltenham  
Gloucestershire  
GL50 1SJ

T. 01242 514 285  
E. [info@morgan-associates.co.uk](mailto:info@morgan-associates.co.uk)  
W. [www.morgan-associates.co.uk](http://www.morgan-associates.co.uk)

These particulars, whilst believed to be accurate are set out as a general outline only for guidance and do not constitute any part of an offer or contract. Intending purchasers should not rely on them as statements of representation of fact, but must satisfy themselves by inspection or otherwise as to their accuracy. No person in this firm's employment has the authority to make or give any representation or warranty in respect of the property.

